



GEARHEADS(ULTRA POWERFUL TYPE) Frame size 90mm sq. (3.54 in. sq.)

BALL BEARING TYPE

▶ **RATED TORQUE OF GEARHEAD**

| MODEL | Speed(rpm) | | 500 | 300 | 200 | 120 | 100 | 60 | 50 | 30 | 20 | 15 | 10 | 6 | 5 | 3 | 2 | 1 | |
|---|------------|-------|-------|-------|-------|--------|--------|--------|--------|--------|--------|--------|--------|--------|--------|--------|--------|--------|-------|
| | Ratio | Speed | 3 | 5 | 7.5 | 12.5 | 15 | 25 | 30 | 50 | 75 | 100 | 150 | 250 | 300 | 500 | 750 | 1500 | |
| | | 60Hz | 3.6 | 6 | 9 | 15 | 18 | 30 | 36 | 60 | 90 | 120 | 180 | 300 | 360 | 600 | 900 | 1800 | |
| L9UK□B L9V10D(DECIMAL) | High | kg-cm | 27.02 | 45.04 | 67.55 | 101.33 | 121.60 | 182.40 | 218.87 | 300 | 300 | 300 | 300 | 300 | 300 | 300 | 300 | 300 | |
| | Low | | 12.88 | 21.47 | 32.20 | 48.30 | 57.96 | 86.93 | 104.32 | 173.87 | 234.71 | 300 | 300 | 300 | 300 | 300 | 300 | 300 | |
| | High | N-m | 2.65 | 4.417 | 6.625 | 9.937 | 11.925 | 17.887 | 21.464 | 29.420 | 29.420 | 29.420 | 29.420 | 29.420 | 29.420 | 29.420 | 29.420 | 29.420 | |
| | Low | | 1.263 | 2.105 | 3.158 | 4.736 | 5.684 | 8.525 | 10.230 | 17.051 | 23.018 | 29.420 | 29.420 | 29.420 | 29.420 | 29.420 | 29.420 | 29.420 | |
| | High | oz-in | 375.2 | 375.2 | 375.2 | 375.2 | 375.2 | 375.2 | 375.2 | 375.2 | 375.2 | 375.2 | 375.2 | 375.2 | 375.2 | 375.2 | 375.2 | 375.2 | 375.2 |
| | Low | | 178.9 | 298.1 | 447.1 | 670.7 | 804.8 | 1207.3 | 1448.7 | 2414.5 | 3259.6 | 4166.2 | 4166.2 | 4166.2 | 4166.2 | 4166.2 | 4166.2 | 4166.2 | |

- * The normal torque is that the motor and gearhead are directly coupled.
- * Insert the denominator of reduction ratio in □ of gearhead model name.
- * Actual rotation speed is 2-15% less than synchronous speed.
- * Color indicates that the rotation of gearhead shaft is in opposite direction as output shaft of motor.

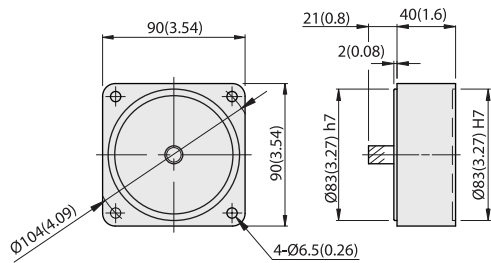
With Decimal Gearhead

DIMENSIONS

Unit : mm(inch)

DECIMAL GEARHEAD

L9V10D

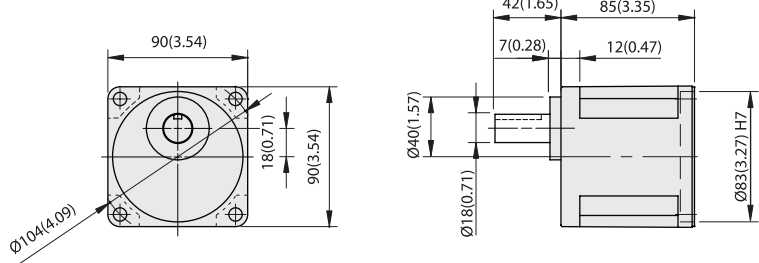


WEIGHT 0.6kg (1.3 lb)

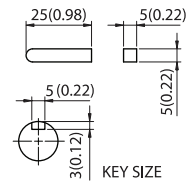


GEARHEAD

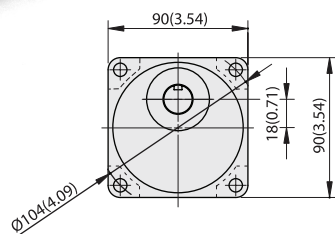
L9UK□B



| MODEL | GEAR RATIO | WEIGHT | | BOLT |
|--------|------------|--------|-----|--------|
| | | kg | lb | |
| L9UK□B | 1/3~1/200 | 1.95 | 4.3 | M6xL20 |



KEY SIZE



L9UK□B + L9I180P□HT

